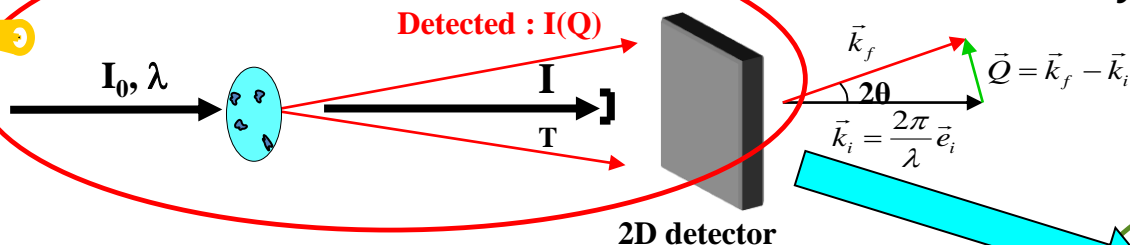
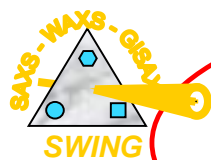


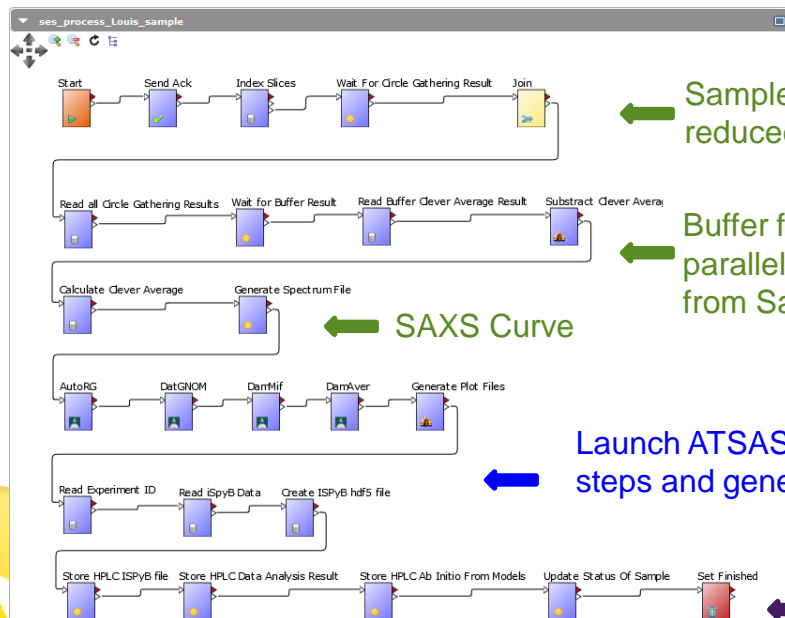
## SAXS data reduction and analysis process automation

### Data Acquisition



Automated Workflow

Deployed on SES Passerelle web server



Sample frames are all reduced in parallel

Buffer frames are all reduced in parallel and average subtracted from Sample frames

SAXS Curve

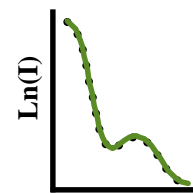
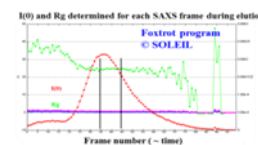
Launch ATSAS data analysis steps and generate results files

Push results to ISPyB portal

### Data Reduction

Radial average + buffer subtraction

Foxtrot program

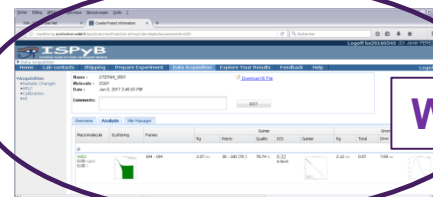


### Data Analysis

(ATSAS suite of programs)



Web Access to results



- ❑ **3 Automated workflows**

- ❖ Dozor
- ❖ AutoPROC
- ❖ XDSME (made by P. Legrand, based on XDS)

- ❑ **Implementation (using haskell language)**

- ❖ Web Server
- ❖ Job submission
- ❖ Job Execution

- ❑ **Triggering**

- ❖ Via MXCube

- ❑ **Foreseeing**

- ❖ Reprocessing functionalities (How to link to IspyB?)

