



| The European Synchrotron

Solange Delagenière

Version

ISPyB 5.4.4 - Last version from December 18th

Installed on 7 beamlines + CryoEM

MX: ID23-1, ID23-2, ID29, ID30A-1, ID30A-2, ID 30B

BX: BM29

CryoEM : CM01



Linked with

Mxcube, BsXCube, Autoproc, EDNA, Scipion

CRIMS

Dockerized

Support

24h, High criticality



Multi techniques summary view

Home Shipment Prepare Experiment Data Explorer Manager Help SMIS search by protein acronym Log out delageni

Home

Choose a Date Choose a period of time enter search term (proposal or title) search by local contact

BM29
 ID23-1
 ID23-2
 ID29
 ID30A-1
 ID30A-2
 ID30A-3
 ID30B
 BM14U
 BM30A
 CM01

Filter by term (proposal or title) or comment

Start	Beamline	A-form	Proposal	Local Contact	MX			BIOSAXS			EM		Comments	
					En. Scans	XRF	Samples	Tests	Collects	Calibration	SC	HPLC		Grid
28-01-2018	BM29		MX1927								6			session created by ISPyBB
28-01-2018	ID23-2		MX1949	NANAO M				90	25					
28-01-2018	ID29		MX1892	DE SANCTIS D	1		70	103	81					
28-01-2018	ID30B		MX1888	MUELLER DIECKMANN C	1		20	141	88					
28-01-2018	ID30A-3		MX1900	FLOT D				85	95					
28-01-2018	ID23-2		OPID232											Session created by the BCM
27-01-2018	ID30A-1		FX1	BOWLER M			1	1	5					MXPressAUTO started
27-01-2018	ID30A-1		FX33	BOWLER M			44	22	145					MXPressAUTO continues
26-01-2018	CM01		MX2003	HONS M			1		8			8	160	

ISPyB @ ESRF: Usage on CryoEM

MX2003

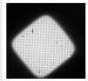
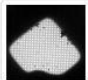

PDF RTF

enter search prefix, sample, protein or filePath

EM 26-01-2018 15:16:32

/data/visitor/mx2003/cm01/20180126/RAW_DATA/EPU_I27/Images-Disc1/GridSquare_25963997/Data

Summary

Sample grid1		2018-01-29 03:55:40	Movies 240	Voltage 300000
Grid Squares 8			Motion Correction 100.0%	Magnification 130000
Voltage 300000			CTF 100.0%	Directory /data/visitor/mx2003/cm01/20180126/RAW_DATA/EPU_I27/Images-Disc1/GridSquare_25963997/Data
Spherical Aberration 2.7				
# Frames 20				
Amplitude Contrast 10%		2018-01-28 19:54:37	Movies 390	Voltage 300000
Scanned Pixel Size			Motion Correction 100.0%	Magnification 130000
			CTF 100.0%	Directory /data/visitor/mx2003/cm01/20180126/RAW_DATA/EPU_I27/Images-Disc1/GridSquare_25963995/Data
		2018-01-28 11:19:19	Movies 428	Voltage 300000
			Motion Correction 100.0%	Magnification 130000
			CTF 100.0%	Directory /data/visitor/mx2003/cm01/20180126/RAW_DATA/EPU_I27/Images-Disc1/GridSquare_25963986/Data

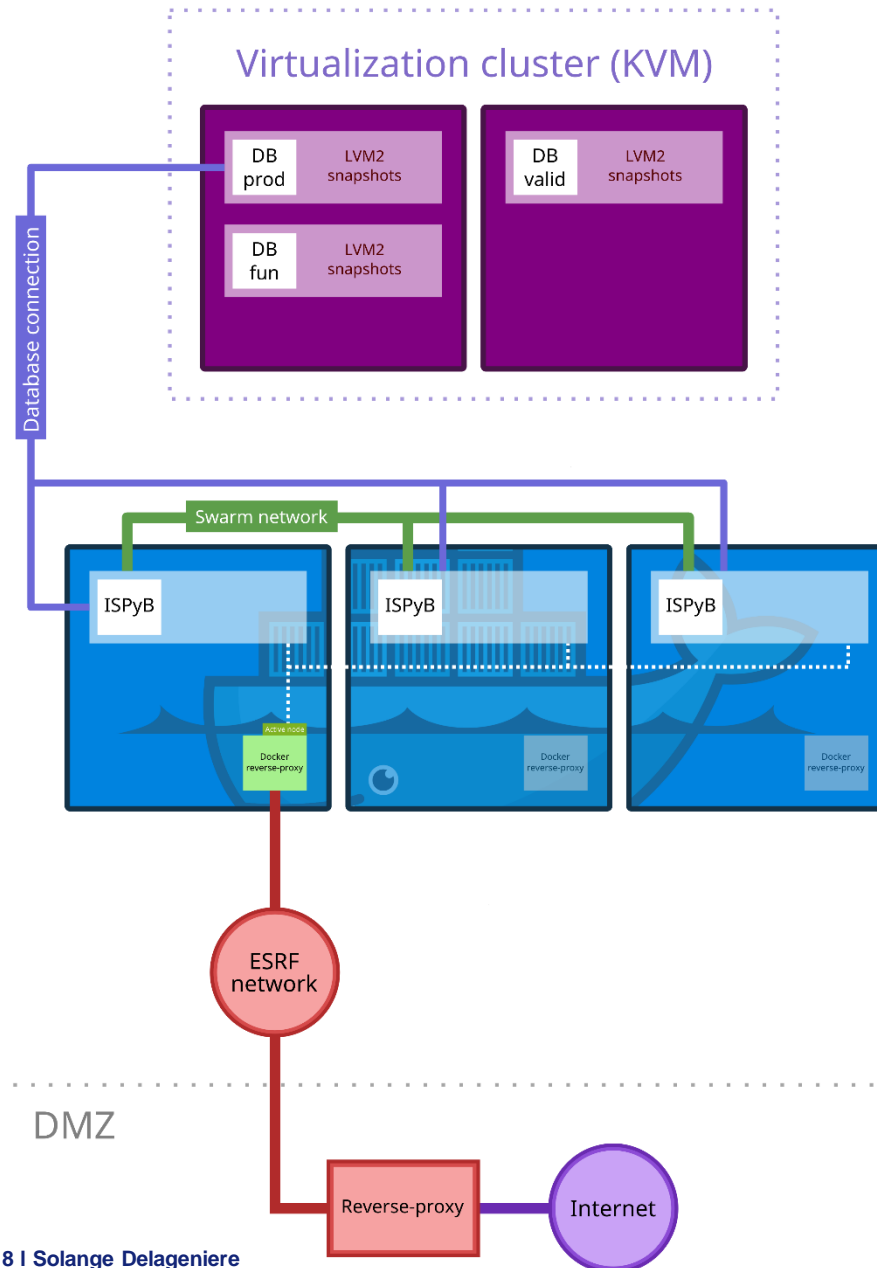
ISPyB @ ESRF: dockerized

Maria DB: 3 instances

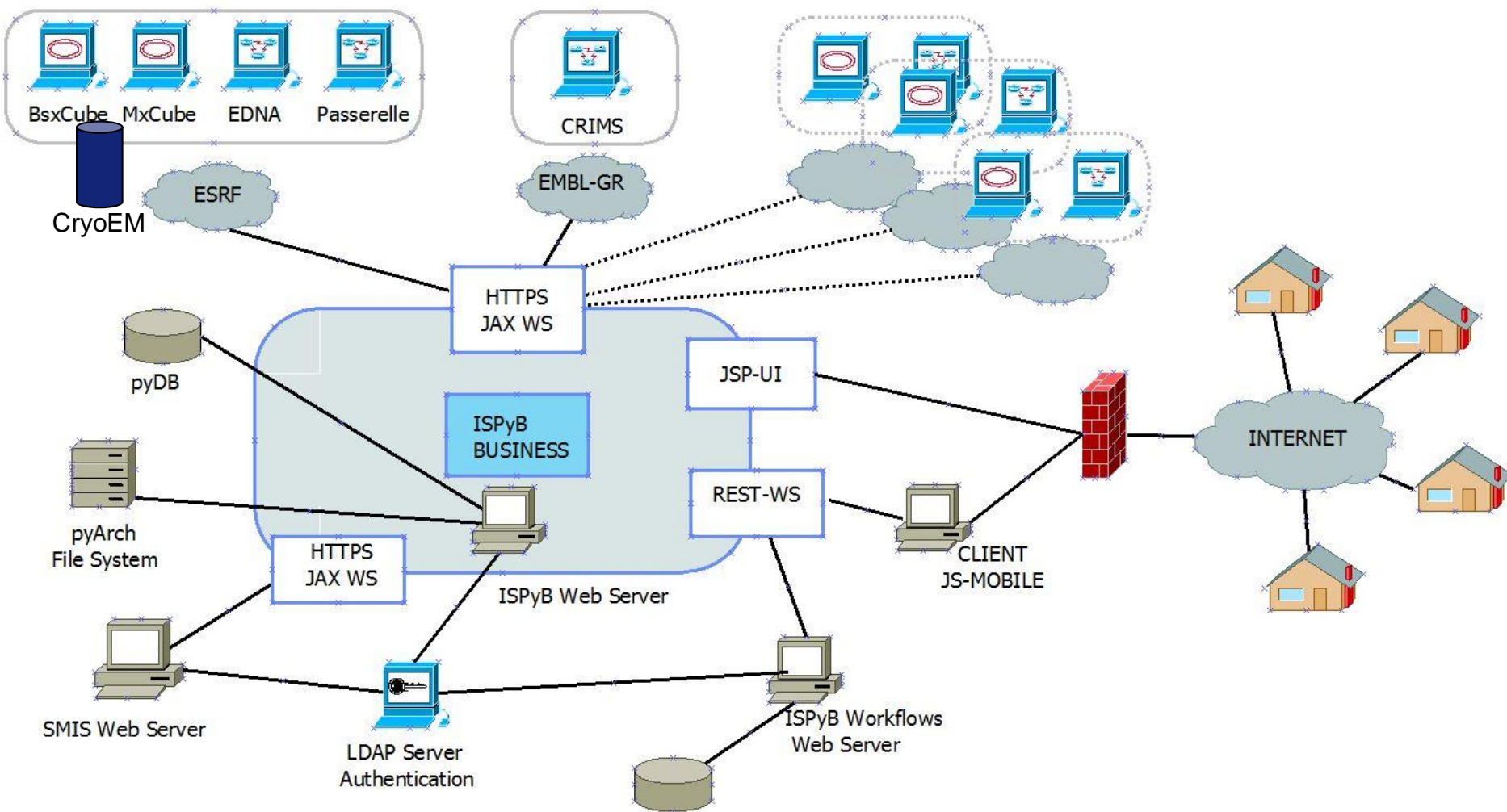
3 Docker containers:

Ispyb
Wildfly
Configuration files

-> Smooth deployment
-> No service interruption

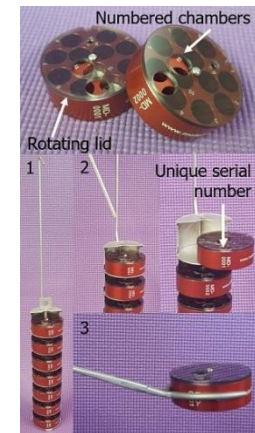


ISPyB @ ESRF: architecture



For all techniques:

- Link SMIS – ISPyB for automatic dewar shipping reimbursement
- EXI webpages portability on different screen sizes
- Inhouse sample storage & tracking



MX & BioSAXS:

- Move all ISPyB web pages to EXI

MX specific:

- Develop the phasing webpages for molecular replacement
- Ligand screening handling for autoprocessing and results display
- Handling the crystallographic plates in EXI

CryoEM specific:

- DataModel refinement
- Further down-stream auto-processing storage and display

Thanks for your attention !

